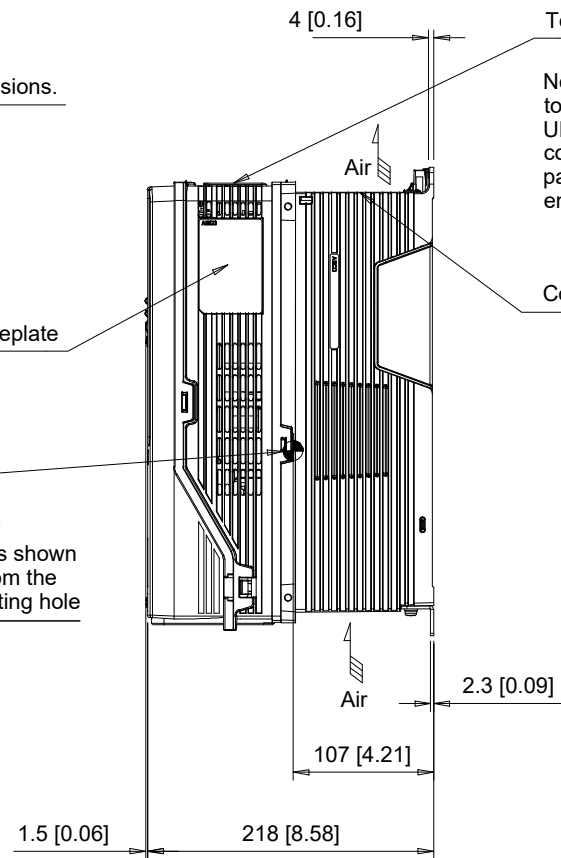
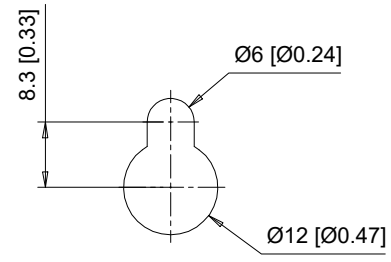


(4) Mounting Holes for M5 [#10] Screws. See Detail A for top mounting hole dimensions.

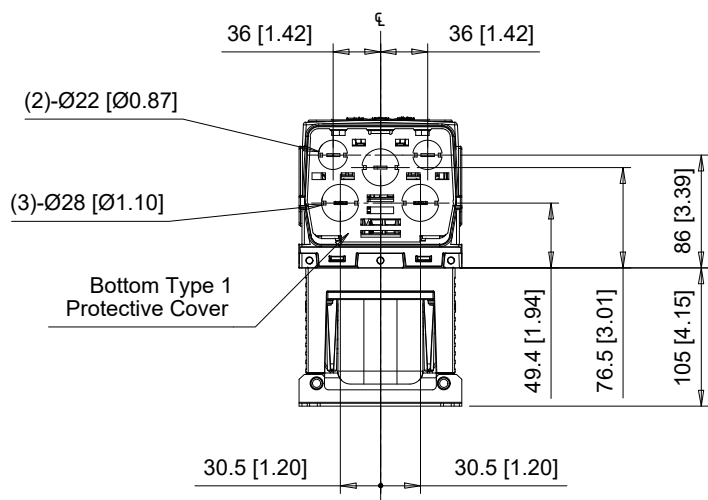
Center of Gravity
Note: Dimensions shown are measured from the bottom left mounting hole



Top Type 1 Protective Cover
Note: Protective covers are factory installed to the top and bottom of the drive to meet UL Type 1 requirements. Remove these covers when operating the drive within a panel. Removing these covers results in an enclosure rating of IP20.



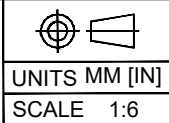
Detail A
Top mounting hole dimensions
Scale 1:1



C/C: FP65□	INPUT VOLTAGE 3-PHASE (VAC)	WEIGHT Kg (lb)		COOLING FANS
		STANDARD	WITH EMC FILTER	
2011□□□	200 TO 240	6.0 (13.2)	6.5 (14.3)	1
2017□□□		6.0 (13.2)	6.5 (14.3)	1
4005□□□	380 TO 480	6.0 (13.2)	7.0 (15.4)	0
4008□□□		7.0 (15.4)	7.5 (16.5)	0
4011□□□		6.5 (14.3)	7.0 (15.4)	1
4014□□□		6.5 (14.3)	7.0 (15.4)	1

□ denotes A-Z

YASKAWA



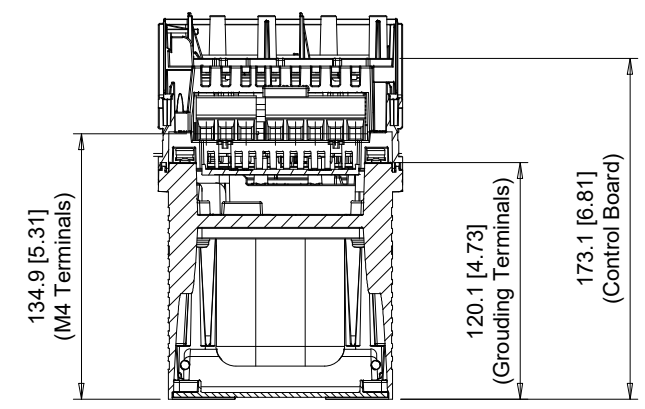
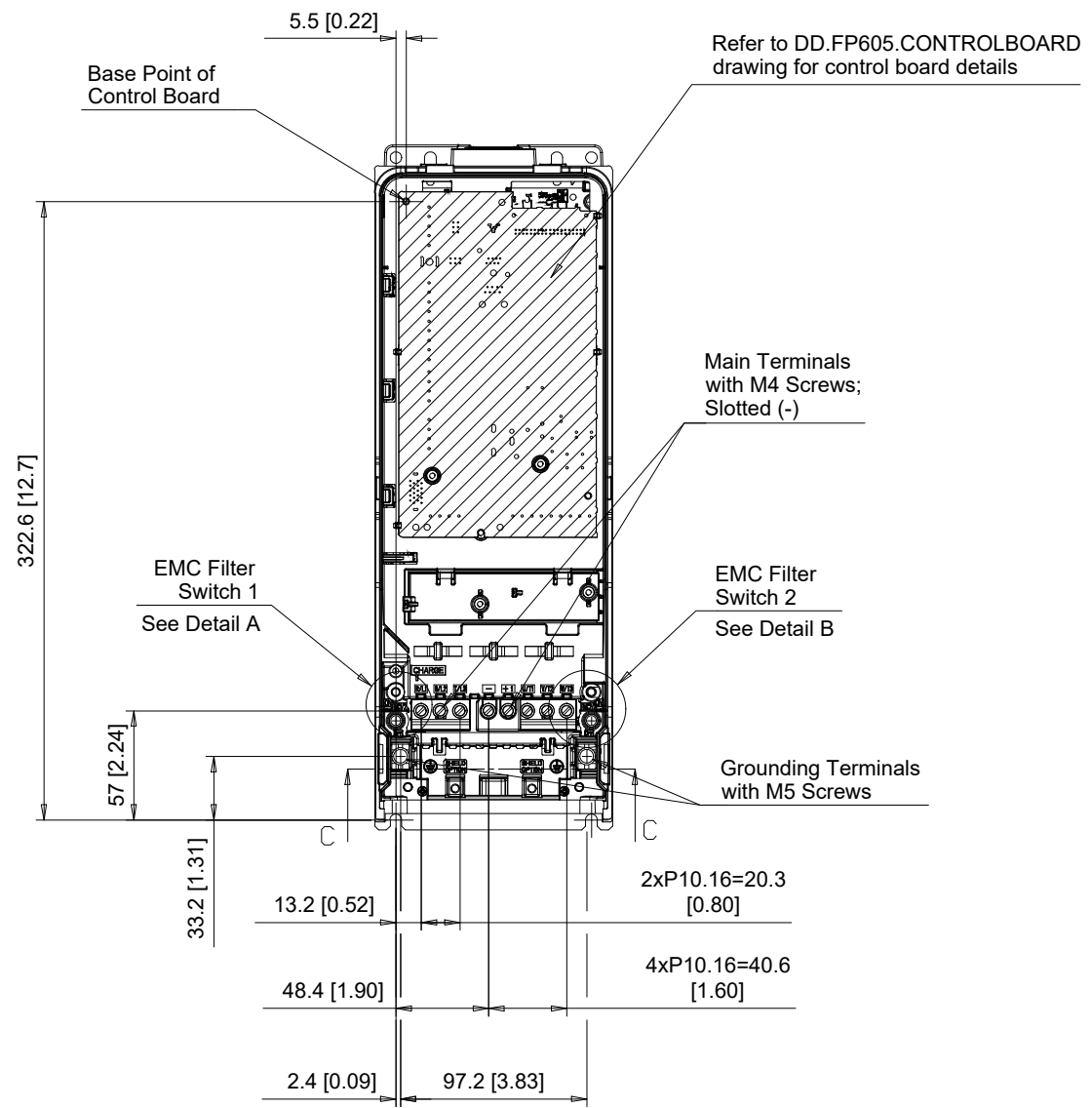
DRWN.	J. MATTAS	3-8-21
CHKD.	J. PIOTROWSKI	3-30-22
TECH.	L. UDDIN	4-16-22
APRV.	J. CAIRO	4-21-22

TITLE
FP605 DIMENSION DRAWING
FRAME SIZE 1
IP20/UL TYPE 1 ENCLOSURE

SIZE A PAGE 1 OF 3
DWG.NO. DD.FP605.FR1.T1

REV 0

A B C D E F G H I J



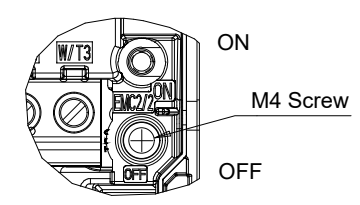
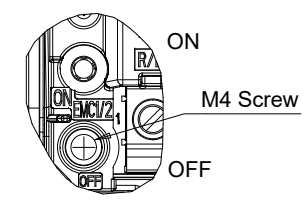
Section C-C

EMC FILTER SWITCHES

Note: EMC filter switches enabled only on models with built-in EMC filter

EMC SW1

EMC SW2



Detail A
Scale 1:2

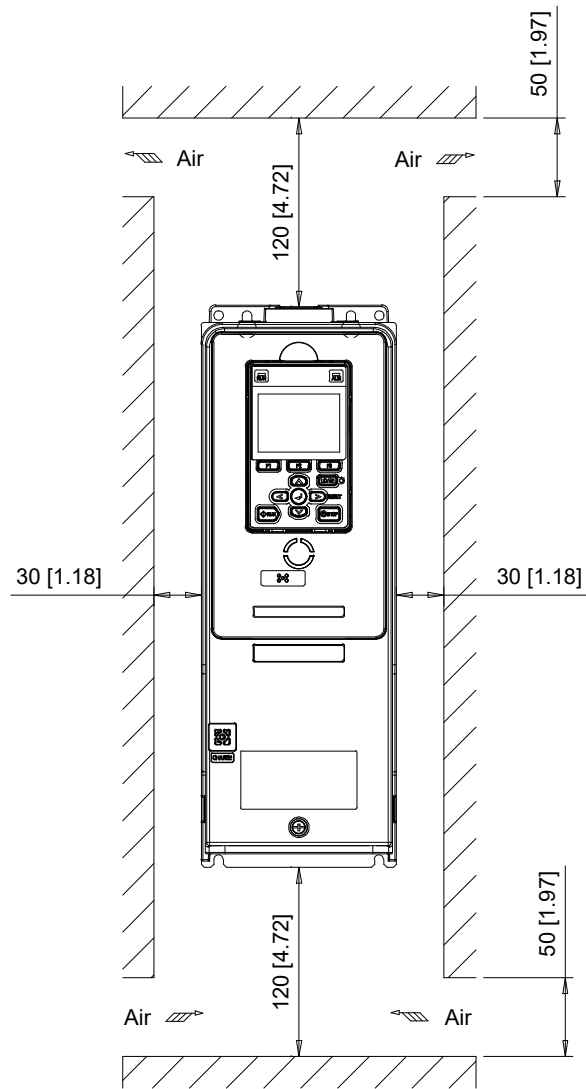
Detail B
Scale 1:2

C/C: FP65□	TERMINAL SYMBOL	WIRE RANGE AWG (mm ²)	TERMINAL SCREW	CLAMPING TORQUE N.m. (lb.in.)
2011□□□	R/L1, S/L2, T/L3	14 - 6 (2.5 - 16)	M4	1.7 (15)
2017□□□	U/T1, V/T2, W/T3	14 - 6 (2.5 - 16)	M4	1.7 (15)
4005□□□	-, +1	14 - 6 (2.5 - 16)	M4	1.7 (15)
4008□□□	⊕	14 - 8 (2.5 - 10)	M5	2.0 - 2.5 (18 - 22)
4011□□□				
4014□□□				

□ Denotes A-Z

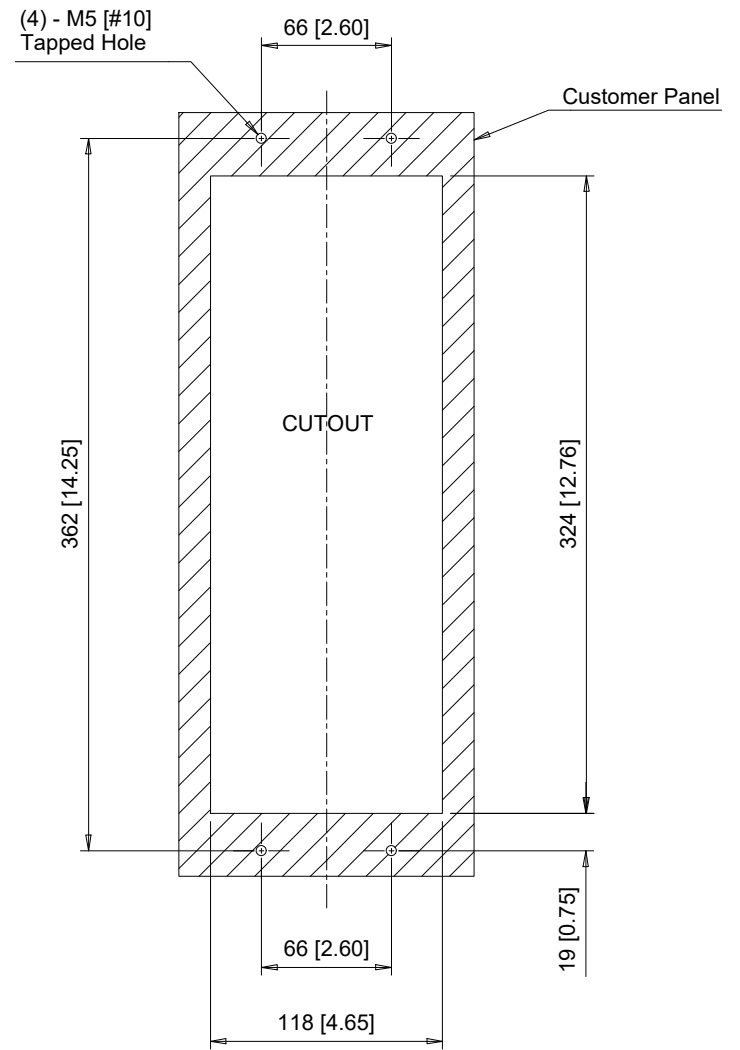
Note: Refer to applicable codes and standards for proper wire type and size.

Minimum Installation Clearances (Scale 1:5)



Note:
For alternate mounting configurations, consult manual.

Panel Cutout (Scale 1:4)
For External Heatsink Mounting Configuration



Notes:
Exposed heatsink minimum clearance D = 110 [4.33].
Refer to external heatsink instructions document for additional details.

YASKAWA

UNITS MM [IN]
SCALE ABOVE

DRWN.	J. MATTAS	3-8-21
CHKD.	J. PIOTROWSKI	3-30-22
TECH.	L. UDDIN	4-16-22
APRV.	J. CAIRO	4-21-22

TITLE
FP605 DIMENSION DRAWING
FRAME SIZE 1
IP20/UL TYPE 1 ENCLOSURE

SIZE A PAGE 3 OF 3
DWG.NO.
DD.FP605.FR1.T1

REV
0